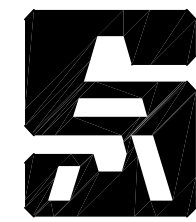
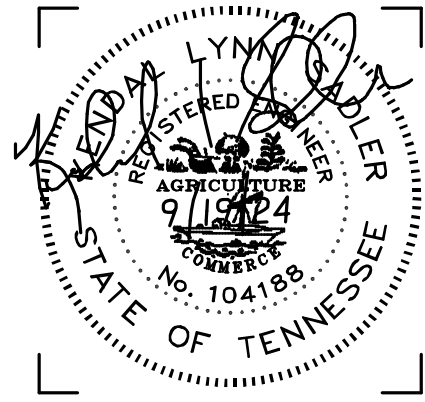


**PROPOSED ATM FOR:  
PEOPLES BANK & TRUST  
WEST MAIN STREET & HWY 41  
MANCHESTER, TENNESSEE**



**SADLER &  
ASSOCIATES  
CONSULTING  
ENGINEERS  
INCORPORATED**

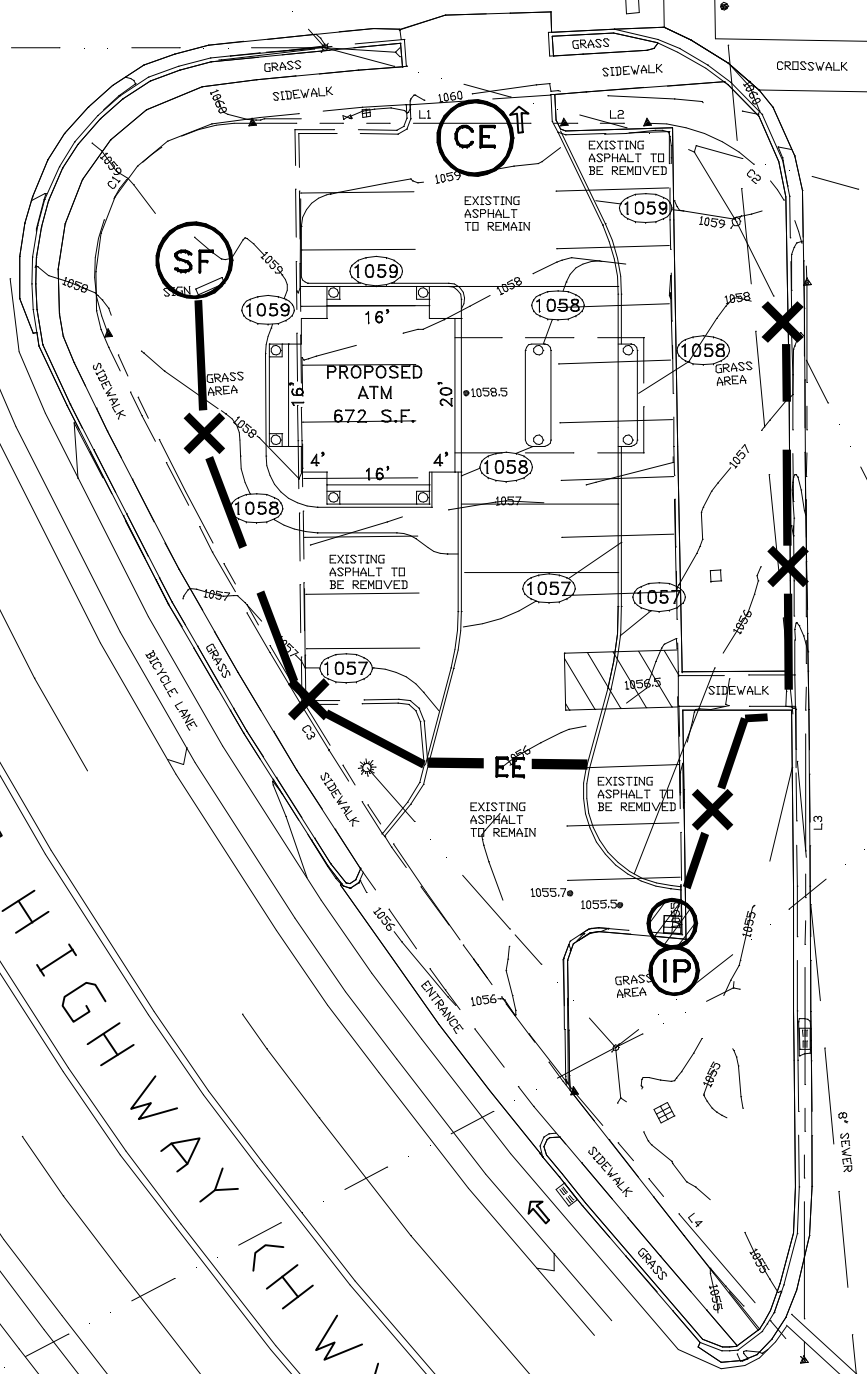
CIVIL • ENVIRONMENTAL  
TRAFFIC • PLANNING  
CONSTRUCTION MANAGEMENT  
Phone: 931-728-4961



DRAWING NO.

**C-3**

DATE: 9/19/24



SOIL EROSION AND SEDIMENT CONTROL LEGEND		
(CE)	CONSTRUCTION EXIT	
(SF)	SEDIMENT BARRIER	
(IP)	INLET PROTECTION	
(EE)	EROSION EELS	
DISTURBED ACREAGE = 0.17± ACRES		

**EROSION  
CONTROL PLAN**



MURFREESBORO HIGHWAY (HWY 41)

WEST MAIN STREET

SOUTH IRWIN STREET

PROPOSED ATM  
672 S.E.

(CE)

(SF)

(IP)

(EE)

FIRE HYDRANT

6" WATER

6" WATER

CROSSWALK

CROSSWALK

6" SEWER (LINE NOT SHOWN IN WATER DEPARTMENT RECORDS)

6" SEWER

(HWY 41)

ENTRANCE

GRASS AREA

EXISTING ASPHALT TO REMAIN

EXISTING ASPHALT TO BE REMOVED

EXISTING ASPHALT TO REMAIN

EXISTING ASPHALT TO BE REMOVED

EXISTING ASPHALT TO REMAIN

EXISTING ASPHALT TO BE REMOVED

EXISTING ASPHALT TO REMAIN

EXISTING ASPHALT TO BE REMOVED

EXISTING ASPHALT TO REMAIN

EXISTING ASPHALT TO BE REMOVED

EXISTING ASPHALT TO REMAIN

EXISTING ASPHALT TO BE REMOVED

EXISTING ASPHALT TO REMAIN

EXISTING ASPHALT TO BE REMOVED

EXISTING ASPHALT TO REMAIN